

VIRGINIA LAKE

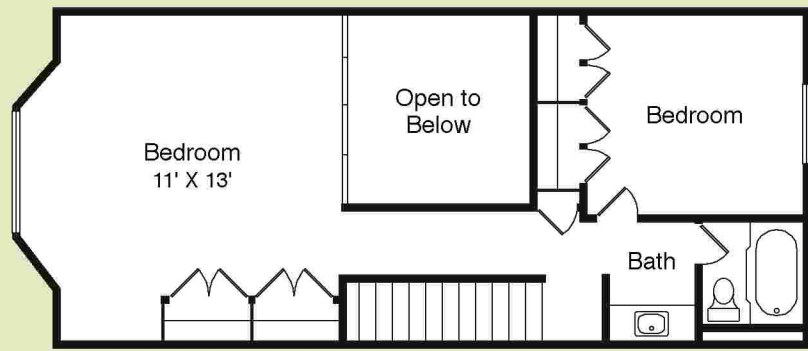
Townhouses & Apartments



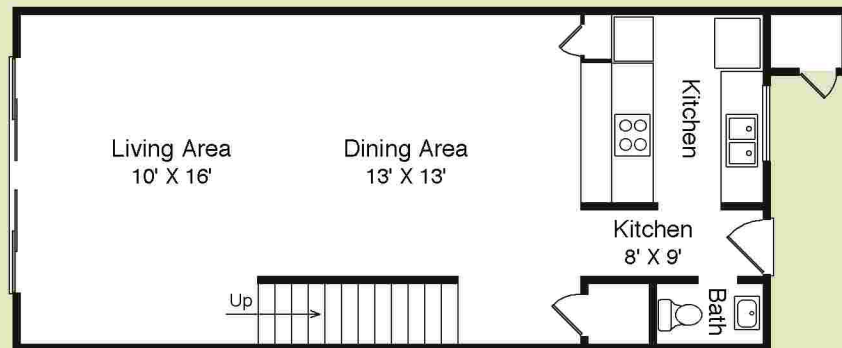
2490 Eastshore Drive • Reno • NV 89509

Tel: 775-825-9266 • Fax: 775-825-9282



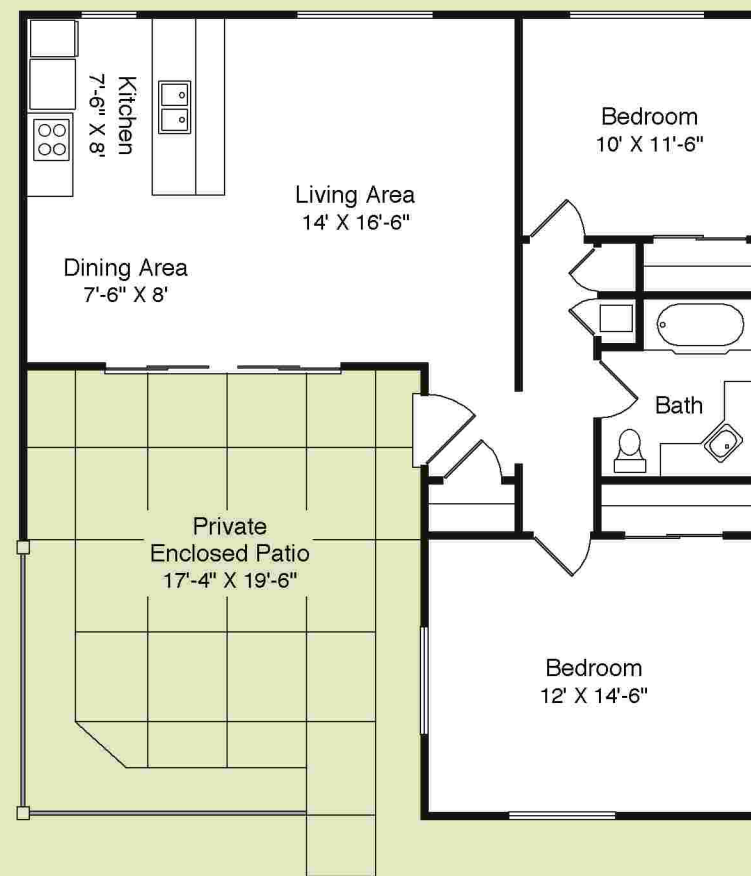


Two Bedroom



**TWO-STORY
TOWNHOUSE**

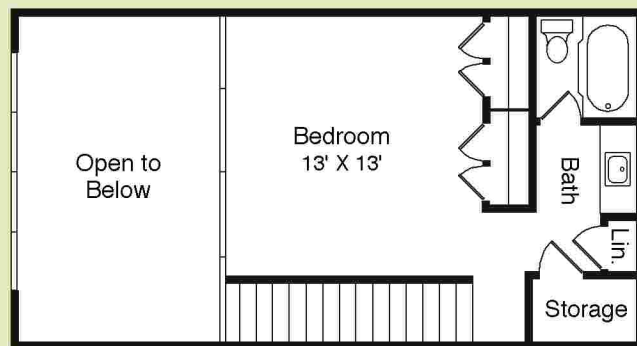
1 Bedroom - Approx. 1204 sq. ft.
2 Bedroom - Approx. 1400 sq. ft.



Two Bedroom

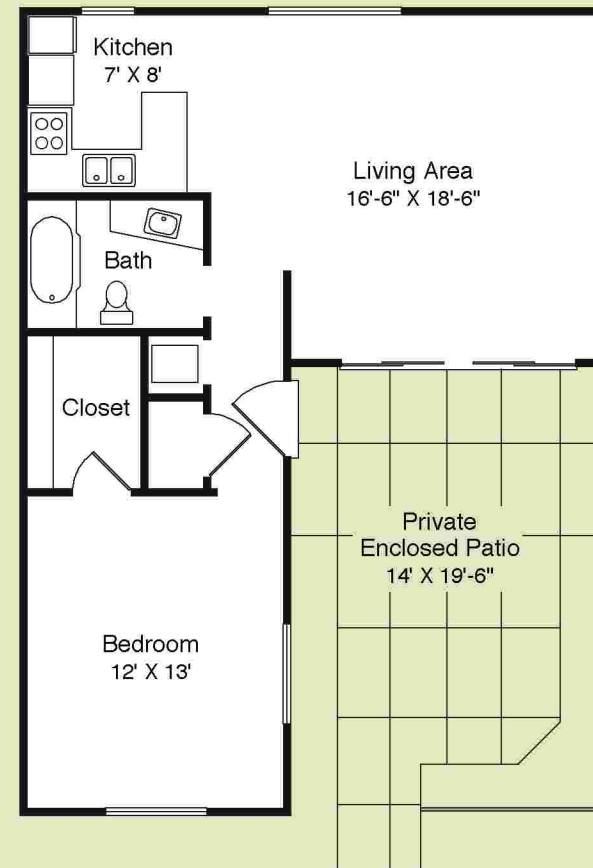
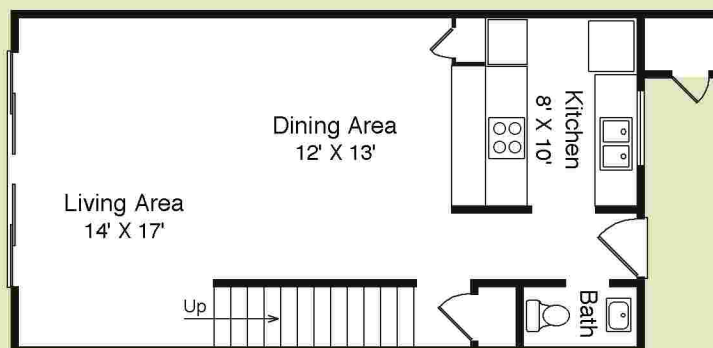
**SINGLE-STORY
GARDEN BUNGALOW**

1 Bedroom - Approx. 929 sq. ft.
2 Bedroom - Approx. 1161 sq. ft.



- Lagoon Patio
- Cathedral Ceilings
- Mezzanine
- Breakfast Bar
- Covered Parking
- Air Conditioning*
- Spacious Closets
- Washer and Dryer hook-ups*

One Bedroom



One Bedroom

- Enclosed Patio
- Rear Entrance
- Large Closets
- Breakfast Bar
- Panoramic Glass Doors
- Generous Parking
- Laundry Care Centers On-Site

All square footages are approximate. Floor plans and room sizes are not to scale and subject to variances.

*In select units.

YOUR
HOME
BY THE
LAKE